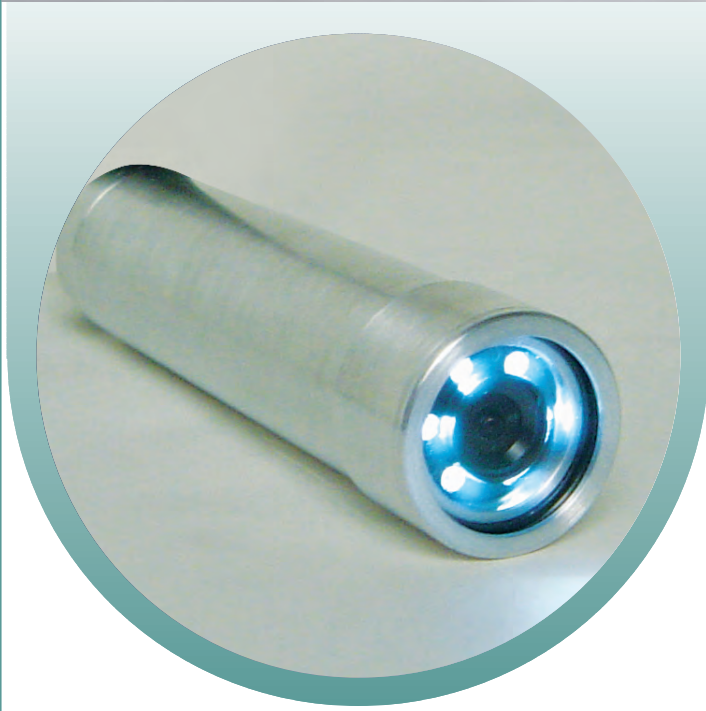


# ROVer

## MINIATURE COLOR CAMERA



**Integrated LED lights and balanced output  
for highest quality video**

**Available with RS-485 for digital 3X zoom,  
color or monochrome operation select,  
and contrast control options**

**Small and rugged design is well suited for deep  
underwater and harsh environments**

***High quality, compact color video camera  
with integrated lights for underwater  
hazardous environment inspection.***

The ROVer is small in size and designed for all monitoring applications including mounting on ROV's, manipulator arms, and diver helmets.

The high quality video output of the camera is attributed to the integration of the Super HAD 1/3" CCD sensor, internally adjustable long line amplification and balanced video output circuitry. The ROVer provides onboard lighting with an internal LED ring. It is available with a wide angle of view lens, which fits into a narrow housing. This camera is designed to plug in and play.

ROVer is equipped with a RS-485 control option, which enables the user to control optional advanced features of the camera: digital 3X zoom, color or monochrome operation select, and contrast control options.

Like all ROS deep water cameras, the ROVer is available in the highest quality corrosion-resistant 6AL4V titanium and is depth rated to 4000 meters (13,125 feet).



# ROVer - Miniature Color Camera

## ELECTRICAL

Horizontal Resolution:	480 TV Lines - NTSC	470 TV Lines - PAL
Faceplate Sensitivity:	0.05 lux - usable display	
	1.0 lux - full resolution	
Scene Illumination:	1 lux	
Sensor Type:	1/3" SuperHAD CCD	
Signal to Noise:	> 45 dB	
Power Input (with LED lights on):	11-30 VDC 310 mA (max)	
Scanning:	525 line / 60 Hz - NTSC	625 line / 50 Hz - PAL
Video Output:	Composite, 1.0V peak to peak into 75 ohm	
	Balanced video output	
	Internally adjustable	
Long Line compensation:	6 LED ring (factory enabled option)	
Internal Lighting:	Color or monochrome operation selectable	
Remote Functions Available with RS-485 (option):	Digital zoom (3X) with digital pan and tilt	
	Adjustment of white balance and color rendition	
	EN50081-1 Emission / EN50082-1 immunity	

Electro-Magnetic Compatibility:

## OPTICAL

Focus Control:	Fixed, 75 mm (2.9 in) to infinity
Field of View in Air:	92° diagonal
Field of View in Water:	54° diagonal

## MECHANICAL

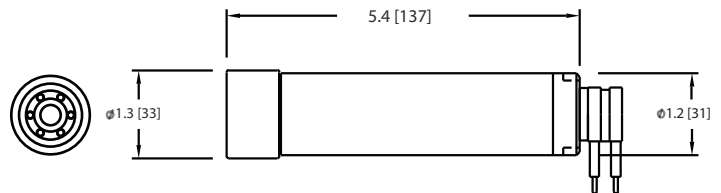
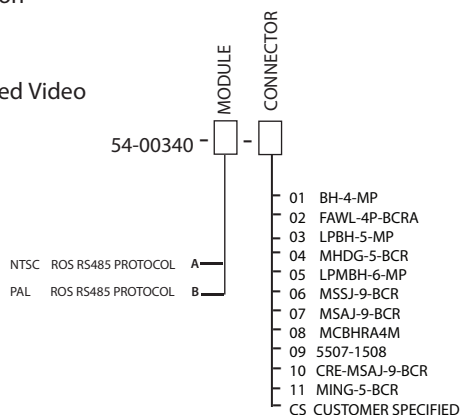
Housing Material:	6AL4V Titanium
Length (w/o connector):	133.4 mm (5.25 in)
Diameter Main Body:	31.0 mm (1.22 in)
Diameter Front End:	33.3 mm (1.31 in)
Weight in Air:	0.19 kg (0.41 lbs)
Weight in Water:	0.07 kg (0.16 lbs)
Viewing Port:	Sapphire
Standard Connectors:	BH-4-MP, FAWL-4P-BCRA, LPBH-5-MP, MHDG-5-BCR, LPMBH-6-MP, MSSJ-9-BCR, MSAJ-9-BCR

## ENVIRONMENTAL

Operating Depth:	4000 m (13,125 ft)
Operating Temperature:	@12VDC in = -5°C to 50°C (23°F to 122°F) in water
(input voltage dependent)	@30VDC in = -5°C to 30°C (23°F to 86°F) in water
Storage Temperature:	-20°C to 60°C (-4°F to 140°F) in air

## ROS STANDARD PIN-OUT

- 1 = Common
- 2 = Video
- 3 = Power
- 4 = Balanced Video



5618 Copley Drive  
 San Diego, CA 92111 USA  
 Tel (858) 565-8500  
 Fax (858) 565-8808  
 East Coast Office (804) 754-3936

[www.rosys.com](http://www.rosys.com)  
[sales@rosys.com](mailto:sales@rosys.com)