

***HP-LED Droplight
Nuclear Lighting
System***

OPERATION AND MAINTENANCE MANUAL



5618 Copley Drive
San Diego, CA 92111-7902
TEL: (858) 565-8500
FAX: (858) 565-8808
www.rosys.com

80-90295 REV A

TABLE OF CONTENTS

WARRANTY	III
CUSTOMER ASSISTANCE.....	IV
CHANGE RECORD	V
1 WARNINGS	6
2 DESCRIPTION.....	6
3 PRODUCT SPECIFICATIONS	7
4 INSTALLATION.....	8
5 OPERATION.....	10
6 MAINTENANCE.....	11
7 TROUBLESHOOTING.....	12
7.1 FAULT ISOLATION OVERVIEW.	14
7.2 FAULT ISOLATION PROCEDURE 1.....	14
7.3 FAULT ISOLATION PROCEDURE 2.....	15

Table of Tables

Table 1, Specifications	7
Table 2, Trouble Shooting	13

Table of Figures

Figure 1, HP-LED Droplight Head	8
Figure 2, HP-LED Light Head, Front View.....	9
Figure 3, HP-LED Power Supply	9

WARRANTY

ROS, Inc. (hereinafter called "**ROS**") warrants its products as stated below subject to the conditions specified.

ROS warrants its products, when operated under normal conditions, to be free from defects in material or workmanship for a period of one year from the date of purchase provided that inspection by **ROS** discloses that such defects developed under normal and proper use. **ROS** products repaired or replaced pursuant to this warranty shall be warranted for the unexpired portion of the warranty applying to the original product. The liability of **ROS** under this warranty shall exist subject to the following conditions:

- (a) Purchaser properly notifies ROS of such defects and the defective product is returned to ROS, transportation charges paid by Purchaser.
- (b) ROS shall be released from all obligations under its warranty in the event repairs or modifications are made by persons not authorized by ROS.
- (c) Representations and warranties made by any person, including distributors and representatives of ROS, which are inconsistent or conflict with the terms of this warranty, shall not be binding upon ROS unless reduced to writing and approved by an officer of ROS. ROS shall in no event be liable for other direct, special, incidental, consequential, indirect or penal damages.
- (d) The laws of the State of California shall govern this warranty.

In the event the defect is determined to be within the terms of this warranty then **ROS** agrees to repair and/or replace (at **ROS**' discretion) the product or defective portion at no charge to the Purchaser. This warranty does not apply to expendable items or to normal wear-and-tear, and is conditional upon performance of normal preventative maintenance procedures.

Our commitment to quality and customer service directs us to constantly strive to improve our products. The materials and specifications presented in our manuals and data sheets are correct and accurate to the best of our knowledge, and are presented in good faith. However, the information is not guaranteed and is subject to change without notice.

LIMITATIONS OF REMEDIES

Purchaser assumes all risk and liability for results obtained in any installation, operation, or use of the product. Purchaser's sole remedy for any breach of warranty by vendor shall be limited to the "express remedies" set forth above. Otherwise, in no event shall vendor, its agents, or employees be liable to the original purchaser or any third party for any consequential or incidental damages or expenses of any nature arising directly out of or in connection with the use of vendor projects, even if vendor has been advised of the possibility of such damages or expenses. In any event, unless otherwise contrary to state law, vendor liability under this limited warranty shall not exceed the purchase price of the product.

CUSTOMER ASSISTANCE

ROS, Inc. uses a worldwide network of stocking distributors and representatives who are familiar with our products and are able to provide assistance during installation and/or operation of these products.

If you have any questions or problems with this product that are not covered by this manual or instruction, please contact our agent in your area, or contact us directly by phone or FAX or e-mail.

TEL: (001) 858-565-8500

FAX: (001) 858-565-8808

Sales: sales@rosys.com
Web Site: www.rosys.com
Technical Support: support@rosys.com

CHANGE RECORD

<u>REV</u>	<u>DESCRIPTION</u>	<u>DATE</u>
A	SEE EC-03007	13MAR19

1 WARNINGS



WARNING: Assembly, disassembly, connecting cables, or disconnection of cables, must only occur when the HP-LED Droplight is disconnected from the power source.

- Please be cautious anytime you are dealing with the HP-LED Droplight system. The light is extremely bright and looking directly at the array while it is on could pose a health risk such as blindness. Protective eyewear is required. ROS recommends Honeywell Uvex Stealth® OTG goggles with Shade 5.0.
- When handling the HP-LED Droplight System, or any of its components, please be aware that the light is relatively heavy. Dropping the HP-LED, or any of its components, could result in personal injury or damage to the system.
- Be careful when handling the light, power supply, and cables due to exposed male pins on the connectors. The pins can be damaged if they are bumped excessively. Any damage may result in difficulty when connecting cables or possible flooding for those connections that are underwater.
- When handling the cables, do not pull or tug on the cables more than necessary. Connector or cable damage through cutting of the jacket may result.
- If operating the light in air, be aware that the housing can reach temperatures of 45°C hotter than the surrounding air. It may be too hot to comfortably touch the power supply with your bare hand.

2 DESCRIPTION

The HP-LED Droplight System is a revolutionary underwater LED luminaire utilizing the most advanced LEDs on the market. The quality and intensity of the light from the HP-LED Droplight makes it the highest performing light for today's nuclear industry. With the ability to handle 100 to 240 VAC, the HP-LED Droplight System draws 805 Watts of power and generates an astounding 30,000 lumens of light.

The HP-LED Droplight System consists of two main assemblies: a HP-LED Droplight Power Supply and the HP-LED Droplight Head. The HP-LED Droplight is rail mounted for convenience and the HP-LED Droplight Head is hung from the power cable connected to the HP-LED Droplight Power supply via a cable grip.

3 PRODUCT SPECIFICATIONS

Mechanical Light Head	
Housing Material	Hard Anodized Aluminum
Window Material	Optical Grade Polycarbonate
Mounting	Power Cable Grip with Snap Hook
Weight in Air	7.6 lbs (3.4 kg) (Without Cable)
Weight in Water	5.0 lbs (2.3 kg) (Without Cable)
Size	9.4 in (238mm) X 5.8 in (146mm) x 6 in (152mm) with Connector
Connector	PBH-5-MP DC Inlet
Mechanical Power Supply	
Housing Material	Polycarbonate
Mounting	Railing Hook with Quick Release Pin
Weight in Air	16.6 lbs (7.5 kg)
Size	13.0 in (330mm) x 17.4 in (442mm) x 7.0 in (178mm) excluding Connectors
Connectors	NEMA 5-15P Power Cord AC Inlet PBH-5-FS DC Outlet
Environmental	
Depth Rating	35 meters (IPX8)
Test Pressure	50 psi
Min/Max Operating Temperature	-10°C to 50°C <ul style="list-style-type: none"> The HP-LED Droplight Head must be immersed in water to operate unless power supply is set to 'Air'. The HP-LED Droplight Power Supply is fan cooled.
Storage Temperature (in air)	-25°C to 80°C
Power Supply Thermal Protection	<ul style="list-style-type: none"> Light output reduced when power supply reaches 50°C Thermal cutoff when power supply reaches 100°C ±10°C / power off to reset
Optical/Electrical	
Color Temperature	6300 K (typical)
Light Output	30,000 lumens
Beam Angle	80° Vertical X 80° Horizontal
Power Draw	100-240 VAC, 50-60Hz, 7.0A, 805W (typ)

Table 1, Specifications

4 INSTALLATION

Your new HP-LED Droplight is intended for years of service free use. The HP-LED Droplight is not intended to be serviced or troubleshot in the field. Please contact your sales representative should any issues arise with your new HP-LED Droplight.

To install the HP-LED Droplight Head on the DC power cable, use the free end of snap hook to connect onto the double eye on the mesh cable grip. Push the female connector on the cable into the male connector on the HP-LED Droplight Head. Screw the locking sleeves together but do not twist the cable or connectors.



CAUTION: Do not twist the connectors when connecting or disconnecting the DC power cable to and from the HP-LED Droplight. This will damage the connectors and could lead to flooding of the HP-LED Droplight.

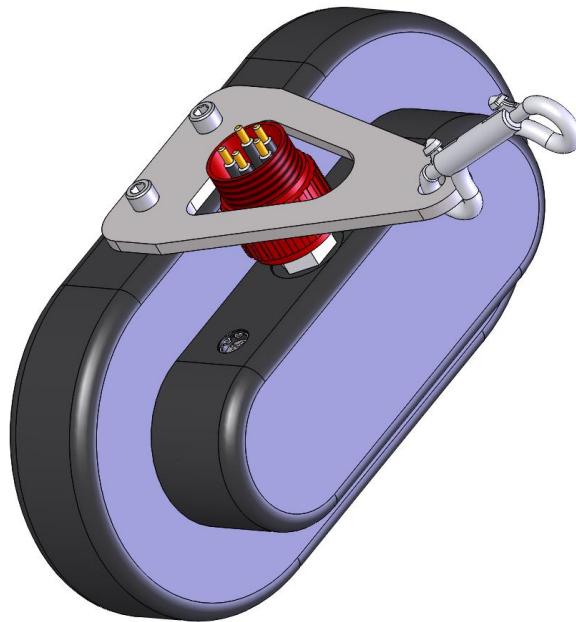


Figure 1, HP-LED Droplight Head



CAUTION: Use careful handling procedures to prevent localized damage to the equipment because corrosion can occur more rapidly in these areas.



Figure 2, HP-LED Light Head, Front View

Push the male connector on the DC power cable into the female connector on the HP-LED Droplight Power Supply. Screw the locking sleeves together but do not twist the cable or connectors.



CAUTION: Do not twist the connectors when connecting or disconnecting the DC power cable to and from the HP-LED Droplight Power Supply. This will damage the connectors and could lead to failure of the HP-LED Droplight System.

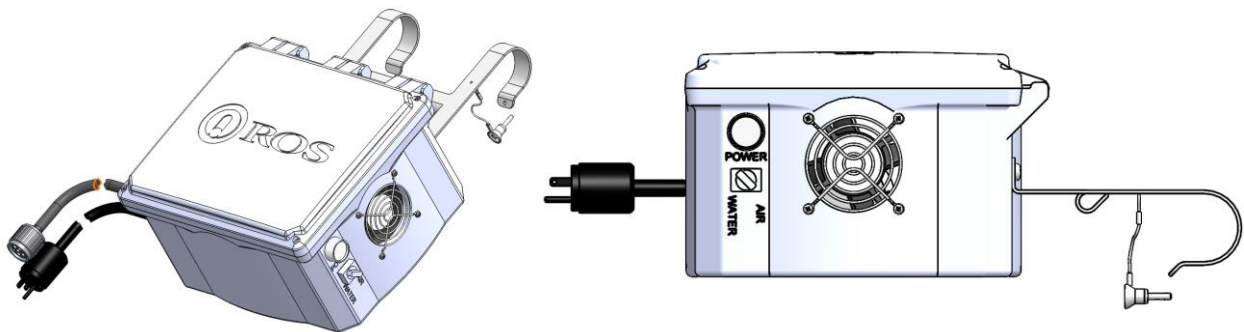


Figure 3, HP-LED Power Supply

Connect the NEMA 15-5P AC power cable from the power supply to an AC power outlet.

Note: Figures 1, 2 and 3 are for illustrative purposes only.

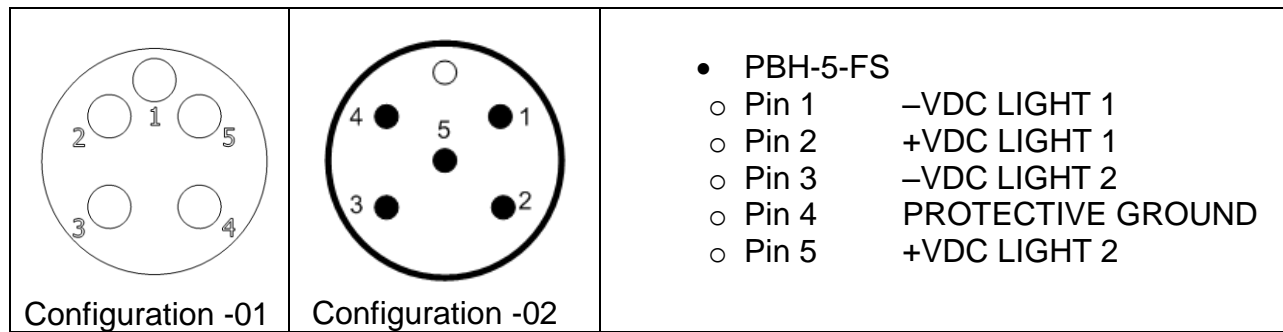


Figure 4, Power Supply, HP-LED Droplight Head Side Connector

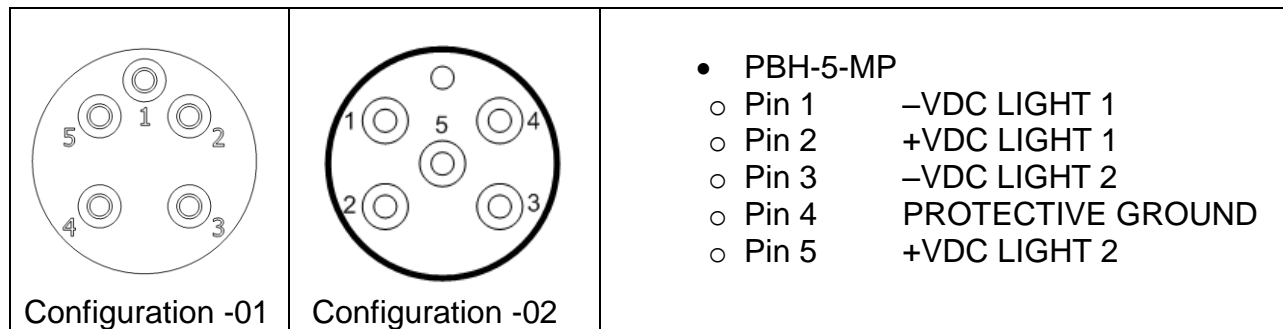


Figure 5, HP-LED Droplight Head Connector

5 OPERATION

The HP-LED Droplight System is designed for the ultimate simplicity of operation. Once the HP-LED Droplight System has been assembled it is only necessary to connect it to a suitable AC Power source. **The HP-LED Droplight Head can only be operated submerged in water unless the selector switch on the HP-LED Droplight Power Supply is set to “Air” to prevent overheating and damage to the LED arrays and windows.** Once the selector switch is set the HP-LED Droplight Head can be turned off and on using the ‘ON/OFF’ pushbutton. Do not look directly at the light when illuminated.



WARNING: Avoid direct eye exposure from clear window. Near UV and blue light can cause eye injury. Luminaire is classified as Risk Group 3 per IEC 62471:2008.

Please note that is normal for one LED array of the HP-LED Droplight Head to illuminate before the other LED array. Both arrays should illuminate within 10 seconds of having full power supplied.



CAUTION: The 'Air/Water' selector switch on the HP-LED Droplight Power Supply must be set to 'Air' when light is not submerged to prevent overheating and damage to light.

The HP-LED Droplight Head should not be removed from the water prior to the power being disconnected to allow the light to cool.



WARNING: During operation the HP-LED Droplight can become hot to the touch. Care must be taken to allow the system to cool down to ambient (room) temperatures prior to handling.

The HP-LED Droplight Power Supply assembly may only be operated in air, but the operating environment should be no higher than 50°C.

6 MAINTENANCE

The HP-LED Droplight System is intended to be maintenance free. Seals do not require periodic replacement, but silicone lubricant is applied on the external connectors at the factory to make it easier to install the cables. The HP-LED Droplight Head is purged with dry air to eliminate moisture which prevents problems with corrosion and condensation.

Though the HP-LED Droplight System is constructed of highly corrosion resistant materials, corrosion of all components can further be minimized by ensuring a good earth ground on the AC Input. Additionally, we recommend careful handling procedures be used to prevent deep scratches or dents which can expose bare aluminum and create localized corrosion.

In the event the luminaire stops working, please contact ROS customer service. For troubleshooting please see section 7.

Note: The HP-LED Droplight System contains no user serviceable components.

7 TROUBLESHOOTING

This section provides information on trouble shooting the HP-LED Droplight System.

Note: The HP-LED Droplight contains no user serviceable components.

The information presented in this section is designed to provide a guide to isolating the source (root) of any problems that may be observed during the operation of the HP-LED Droplight. If a failure is noted the only option for repair in the field is to replace the failed item.

Failure modes, causes, and corrective action are listed in Table 2, Trouble Shooting. A flow chart for trouble shooting is presented in Figure 6, Trouble Shooting Flow Chart. The procedures listed in the flow chart are found later in this section: subsection 1 and subsection 7.3.



WARNING: Assembly, disassembly, connection of cables, or disconnection of cables, must only occur when the HP-LED Droplight is disconnected from the power source. Debugging procedures with the HP-LED Droplight system partially assembled and powered on may only be executed by qualified personnel.



WARNING: During operation the HP-LED Droplight can become hot to the touch. Care must be taken to allow the system to cool down to ambient (room) temperatures prior to handling.



WARNING: Avoid direct eye exposure from clear window. Near UV and blue light can cause eye injury. Luminaire is classified as Risk Group 3 per IEC 62471:2008.

Prior to performing any fault isolation procedure the system should be inspected for any signs of visible damage. These may include denting, discoloration, corrosion, or flooding. All connectors should be inspected to assure that pins are straight and no damage has occurred that could allow misalignment or flooding.

Problem	Typical Cause	Corrective Action
No Light from HP-LED Droplight Head	Power not supplied	Disconnect the HP-LED Droplight system from the mains. Test mains power. Reconnect the HP-LED Droplight as appropriate.
	Power Supply malfunction	Replace Power Supply (see Section 7.2)
	Light Head malfunction	Replace Light Head (See Section 7.3)
	Cable malfunction	Replace cables
One array of Light Head does not output light	Partial Power Supply malfunction	Replace Power Supply (see Section 7.2)
	Partial Light Head malfunction	Replace Light Head (see Section 7.3)
Light turns off while powered	Over temperature protection of Light Head or Power Supply	Allow the HP-LED Droplight to cool for 30 minutes in air, or 15 minutes in water. The temperature of the HP-LED Droplight System should 50°C or less when power is reapplied.
Light blinks on/off within 1 minute	Over temperature switch malfunction	Replace Light Head
	AC Mains low voltage	Test mains power to ensure 100 VAC minimum
Browning or damage to windows	HP-LED Droplight power supply set to “water” while HP-LED Droplight Head is not submerged	Replace Light Head
	Excessive exposure to radiation. Check specifications and operation history.	Replace Light Head
Light output dims over time	Aging of array. Check specifications and operation history.	Replace HP-LED Droplight System
	Excessive exposure to radiation. Check specifications and operation history.	Replace HP-LED Droplight System

Table 2, Trouble Shooting



WARNING: Fault isolation procedures involve the measurement of potentially dangerous voltages at possibly fatal current levels. These procedures should only be executed by personnel that are qualified in such procedures and who are authorized to undertake such procedures.

7.1 Fault Isolation Overview.

In general it can be assumed that, if power is correctly applied to the HP-LED Droplight Light System, any faults will be one or more of the following:

- Failed Cables.
- Failed Power Supply.
- Failed Light Head.

The simplest method for isolating the fault is a “golden system” approach. If known good elements of the system are available for use in fault isolation, then a simple substitution approach may be used. First, substitute the known good light head into the suspect system. Then check for restored operation. If this does not identify the problem, then replace the original light head. Second, substitute the known good power supply and test for restored operation. Finally, substitute the cables and test the system if the fault has not been identified.

For those situations where a “golden system” is not available a more analytical approach can be taken. This process is described in the following two sections.

7.2 Fault Isolation Procedure 1

The purpose of this procedure is to isolate the probable root failure for an HP-LED Droplight System that is producing no light. It is assumed that the unit has been checked for damage or flooding and that no abnormalities have been detected. Further, it is assumed that power to the unit has been checked and that all cables are in good repair and properly connected. This procedure checks the HP-LED Droplight Power Supply.

Equipment required: DVM

If an HP-LED Droplight Light is producing no light output the problem could be in either the power supply or the Light Head. In general, a no light output condition will only occur under one of two conditions: the light is operated above the maximum operating temperature (such as with the Light Head be operated in the air), or in the case of a power supply failure. The two light emitting discs in the HP-LED Droplight head are powered independently. Therefore if both discs are not producing light it is probable that the HP-LED Droplight Power Supply has failed.

A basic check of the Power Supply can be performed by measuring the voltage output of the power supply:

- First, disconnect the HP-LED Droplight System from power.

- Next, disconnect the cable from the power supply to the Light Head. Disconnect at the light head.
- Supply power to the HP-LED Droplight Power Supply.
- Measure the voltage between Pin 2 and Pin 1 on the output connector of the power supply.
- Next, Measure the output between Pin 5 and Pin 3.

Both readings should be greater than 40V. If the voltages read are lower than 40V it can be assumed that the power supply is bad.

Note: It is indicative, though not definitive, that a voltage above 40V constitutes a working power supply. However, no (or very low) voltage readings on either output positively identifies a failed power supply.

7.3 Fault Isolation Procedure 2

The purpose of this procedure is to isolate the probable root failure for an HP-LED Droplight System that is producing no light. It is assumed that the unit has been checked for damage or flooding and that no abnormalities have been detected. Further, it is assumed that power to the unit has been checked and that all cables are in good repair and properly connected. This procedure checks the HP-LED Droplight Head.

Equipment required: Laboratory power supply capable of producing 2A @ 30V.

- First, disconnect the HP-LED Droplight System from power.
- Next, disconnect the cable from the power supply to the Light Head. Disconnect at the light head.
- Set the laboratory power supply to a current limit of 0.5A.
- Set the laboratory power supply to a voltage to 0.0V.



CAUTION: Failure to observe the correct polarities will cause damage to the light head and will void the warranty.

- First, connect the laboratory power supply to the light head: the positive lead to Pin 5 and the negative lead to Pin 3.



WARNING: Though the light output will be considerably less than when a functional HP-LED Droplight is in operation, the light level will still be quite bright. Care should be taken to not look directly into the light head.

- Slowly increase the voltage on the power supply to 30V.
- If the light head is functional light should be seen coming from one of the two discs in the HP-LED Droplight Head.
- Set the voltage of the laboratory power supply to 0V.

- Disconnect the laboratory power supply from Pin 3 and Pin 5.
- Connect the laboratory power supply to the light head: the positive lead to Pin 2 and the negative lead to Pin 1.
- Slowly increase the voltage on the power supply to 30V.

The other disc in the HP-LED Droplight Head should illuminate. The light level from both sides of the Light Head should have been approximately equal when energized.

- Set the voltage of the bench top power supply to 0V.
- Disconnect the laboratory power supply from the light head.

If both LED arrays illuminate with approximately the same level of light output, then it can be assumed that the light head is functional.

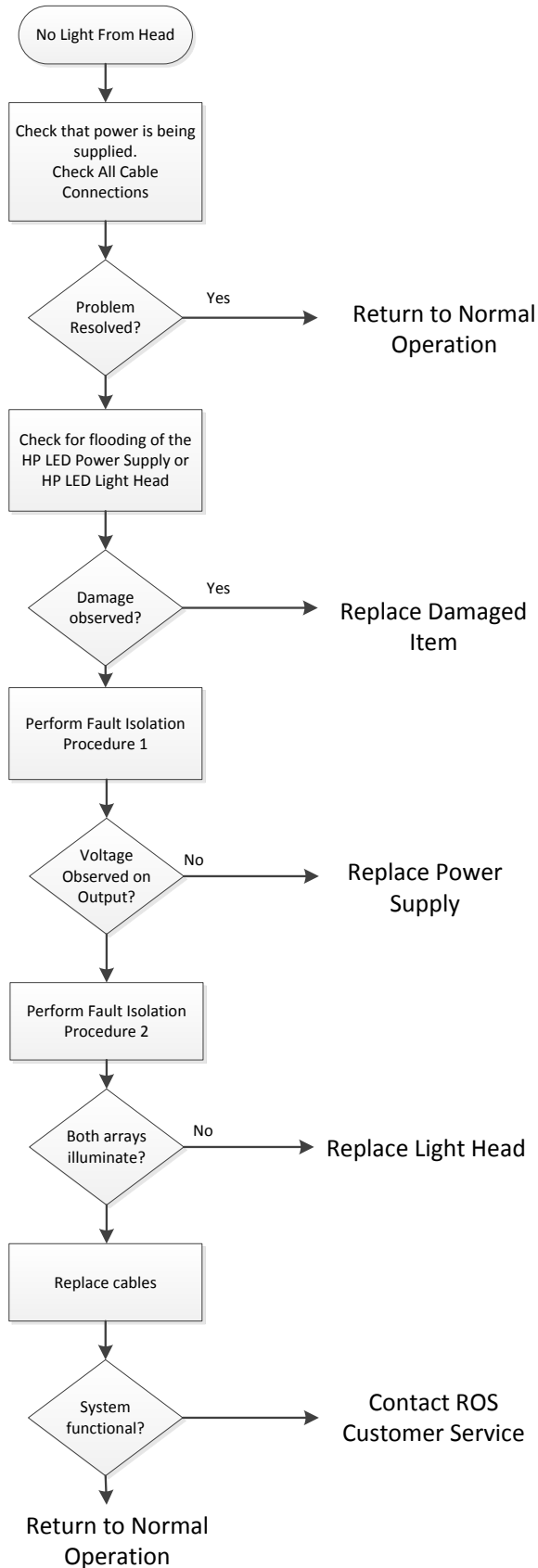


Figure 6, Trouble Shooting Flow Chart